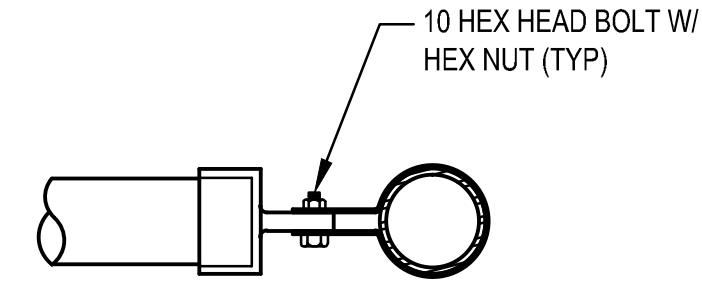
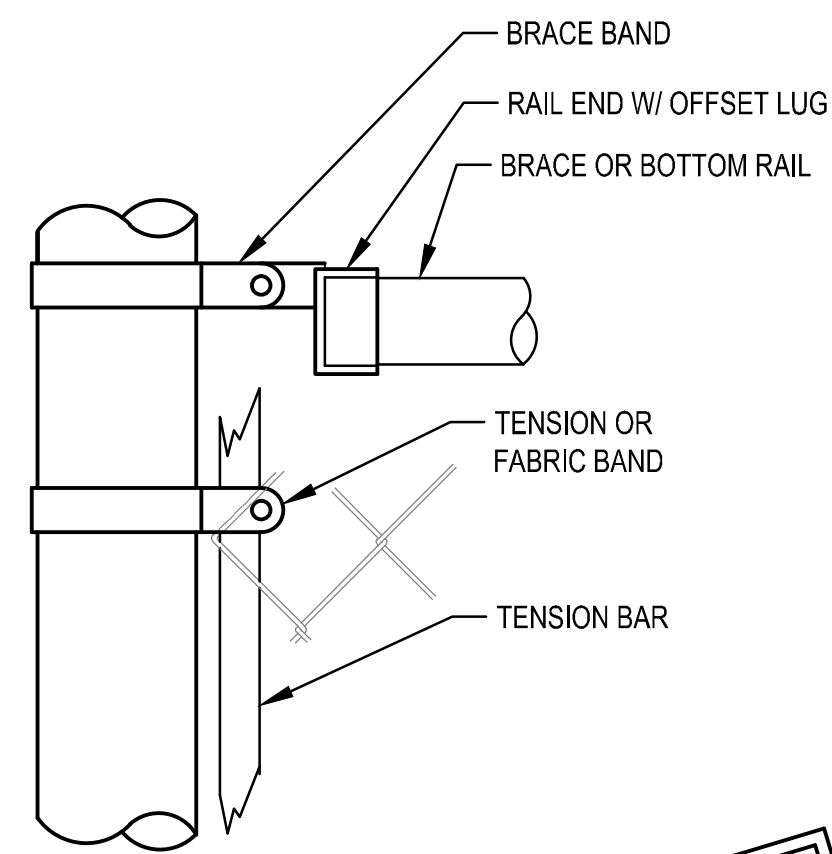


PLAN

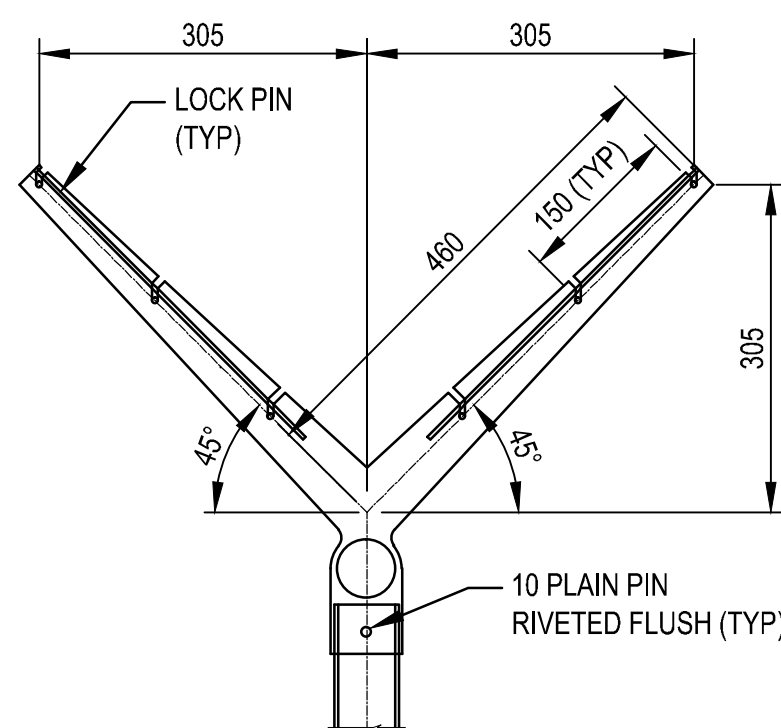


PLAN - ROUND POST

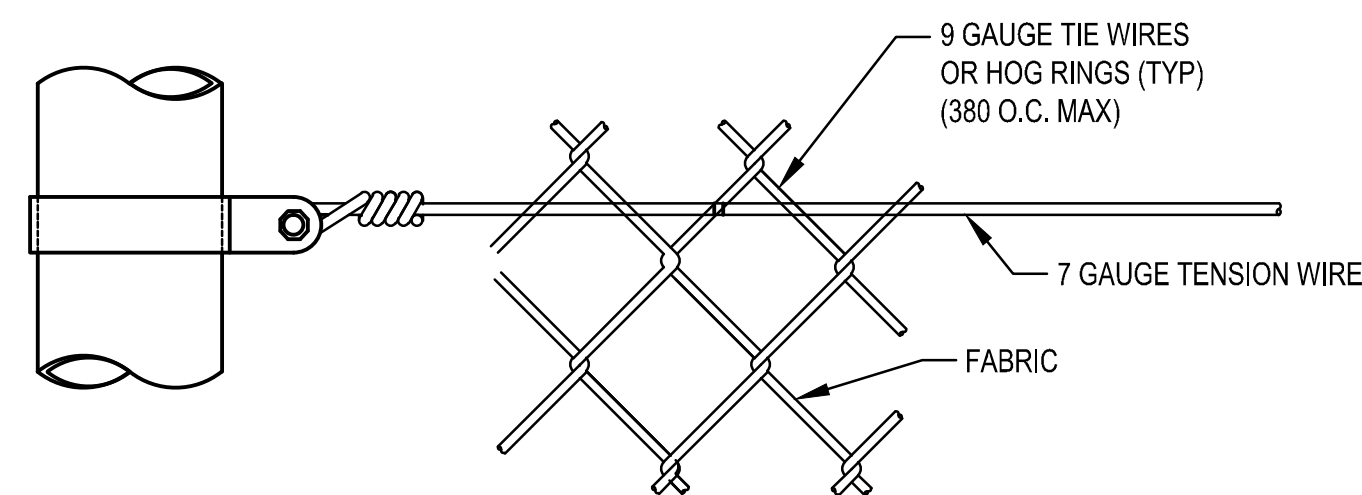


ELEVATION

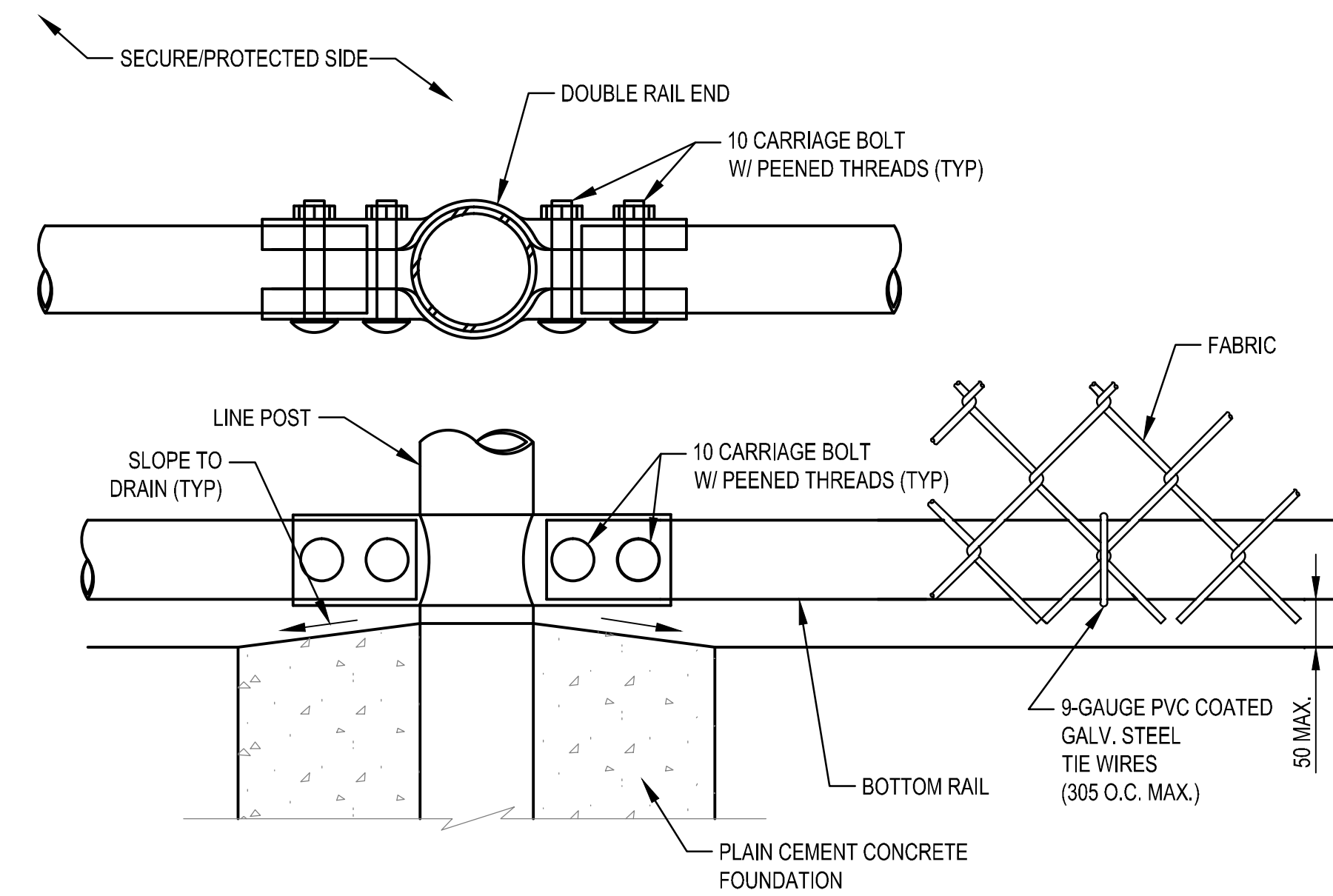
1 DETAIL - CORNER AND LINE POSTS  
SCALE: NTS



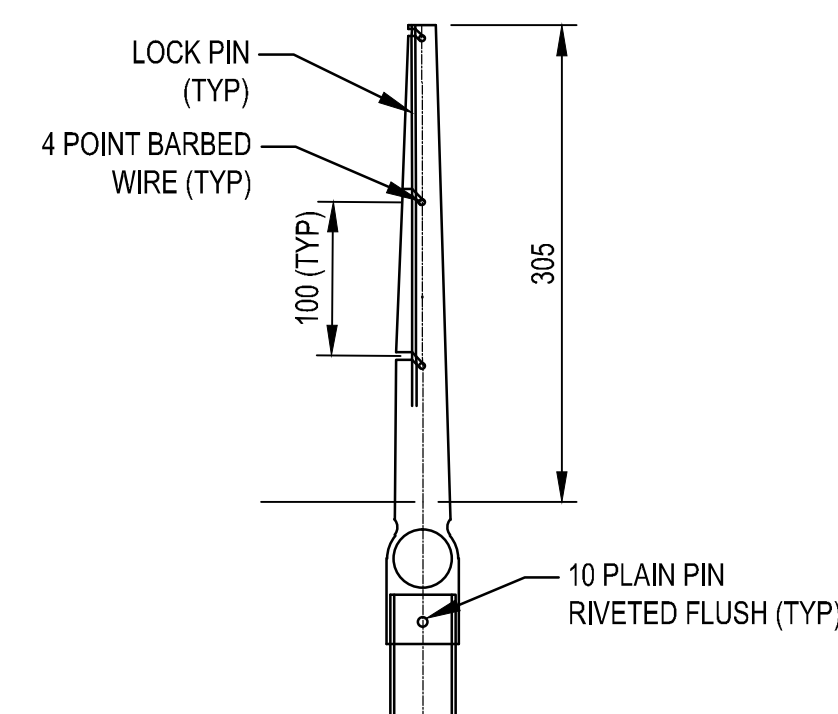
4 DETAIL - LINE POST EXTENSION ARMS  
SCALE: NTS



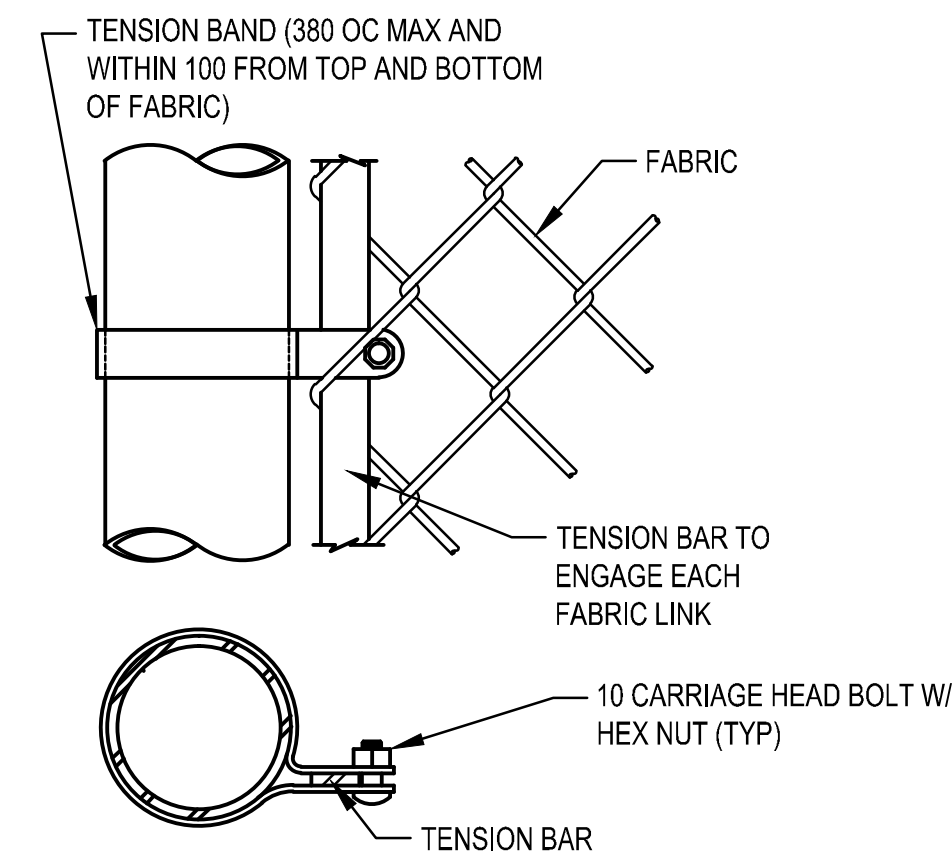
7 DETAIL - TENSION WIRE ATTACHMENT  
SCALE: NTS



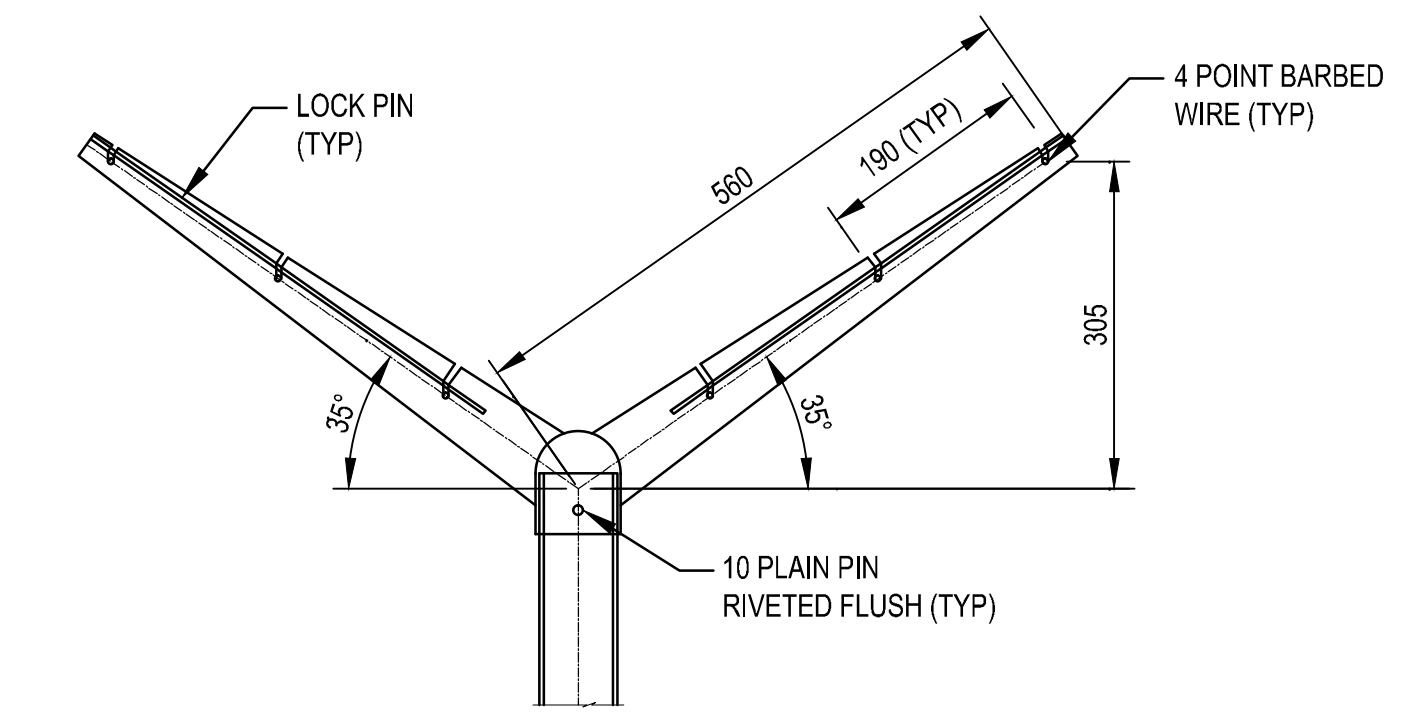
2 DETAIL - BOTTOM RAIL  
SCALE: NTS



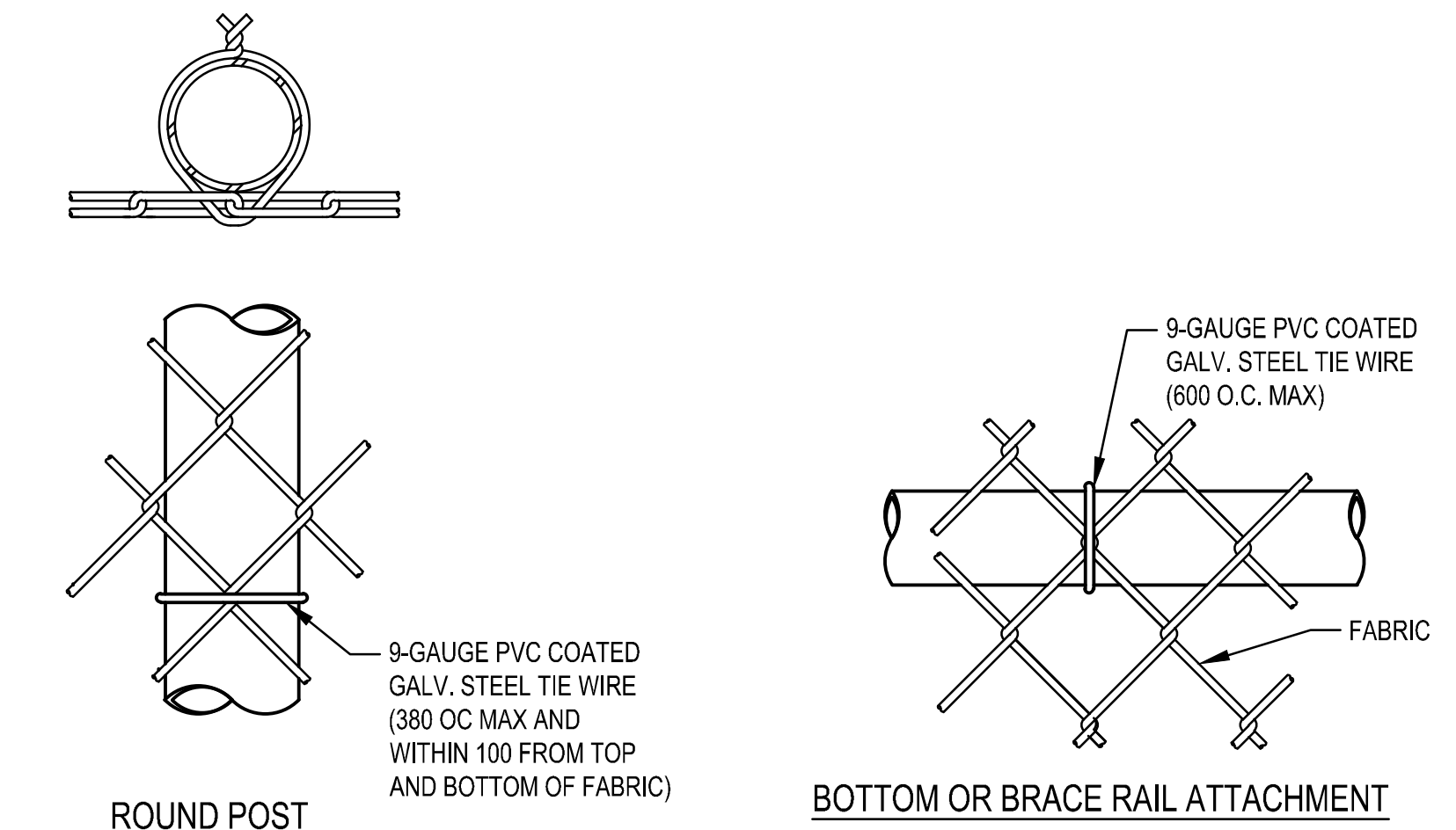
5 DETAIL - GATE EXTENSION ARM  
SCALE: NTS



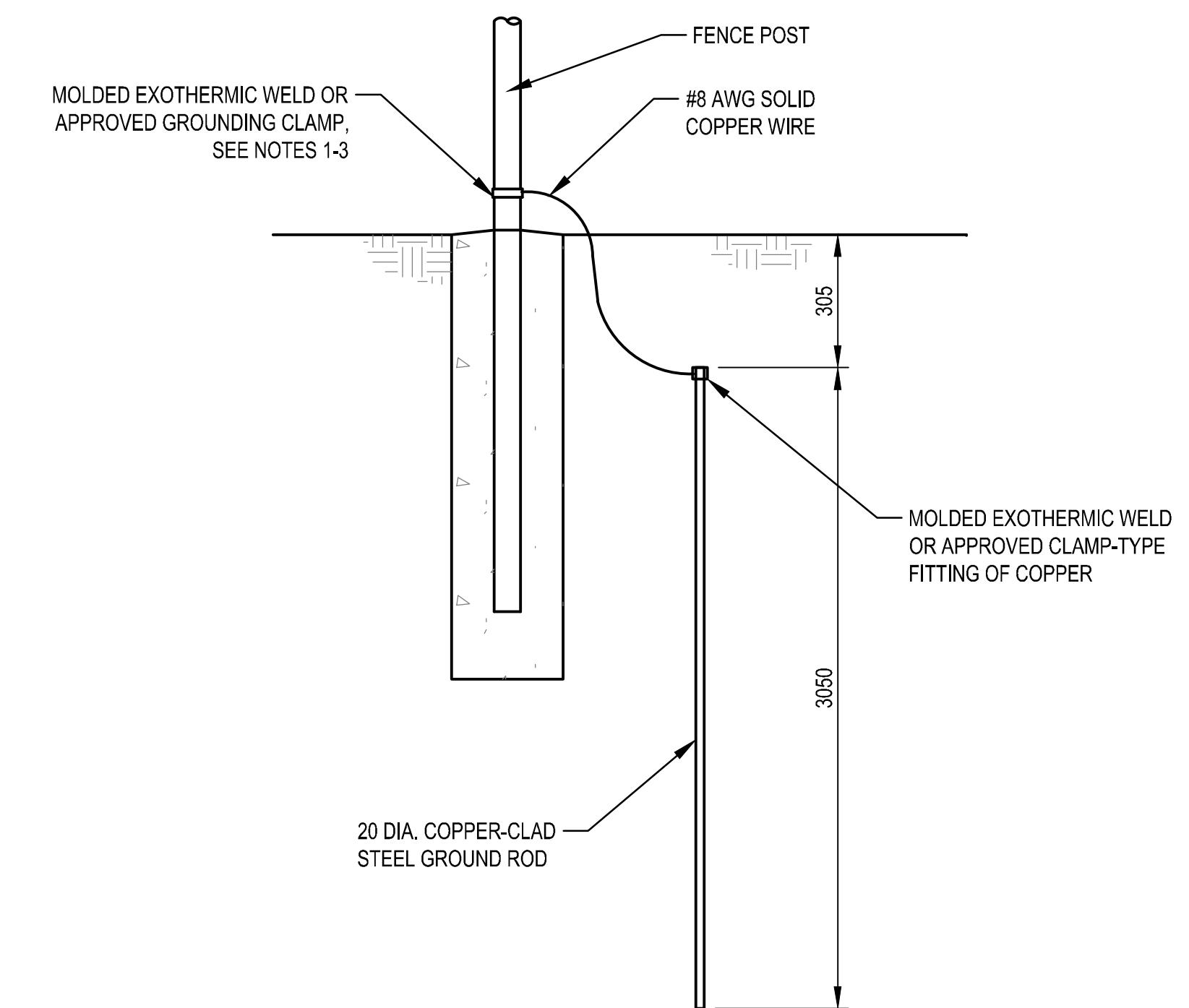
8 DETAIL - TENSION BAR  
SCALE: NTS



3 DETAIL - CORNER POST EXTENSION ARMS  
SCALE: NTS



6 DETAIL - POST AND RAIL ATTACHMENT  
SCALE: NTS



9 DETAIL - GROUNDING  
SCALE: NTS

NOTES:

- GROUNDING AND BONDING OF THE FENCE SYSTEM MUST BE IN ACCORDANCE WITH THE CONTRACT SPECIFICATIONS.
- A BURIED BONDING JUMPER MUST BE USED TO BOND ACROSS A GATE OR OTHER OPENING IN THE FENCE.
- CHAIN LINK FABRIC MUST BE BONDED TO FENCE POSTS AT GROUNDING LOCATIONS. REPAIR CORROSION RESISTANT SURFACE OF FABRIC AND POST PER MANUFACTURER REQUIREMENTS TO MAINTAIN CORROSION WARRANTIES.